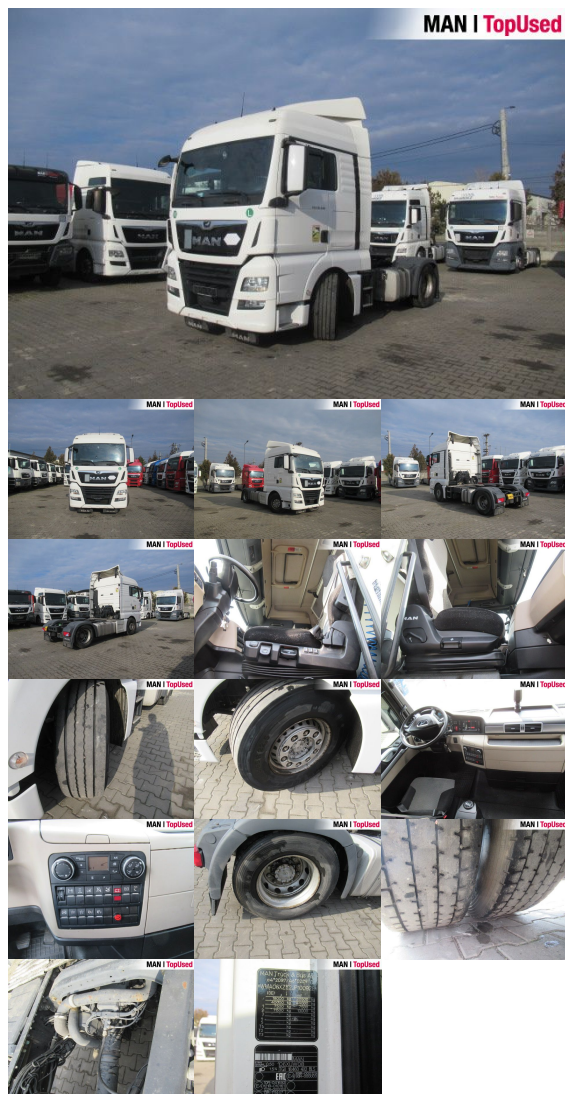


# MAN TGX 18.460 4X2 BLS

SH03600124



Price **17,490 EUR** (net)

**21,163 EUR** (gross)

Offer Date 16.08.2025

Body type	Tractor unit
1st reg.	11/2017
Power	338kW (460 HP)
Mileage	504971 km
Storage location	Otopeni - MHS Truck Service

## BASIC DATA

Brand	MAN
Model serie	TGX
Model variant	TGX TG2
Body type	Tractor unit (Standard)
Colours	white
Driver's cab	XLX
Berths	1 berth

## TECHNICAL DATA

Power	338 kW (460 HP)
Fuel	Diesel
Gearbox type	Automatic
Wheel drive	4x2
Suspension	Leaf air suspension
Axles	2 axles

## WEIGHTS AND MEASURES

GVW	18,000 kg
Rear overhang	800 mm
Wheel base	3600 mm
Fuel tank	AdBlue: 60 l Fuel tank: 250 l Fuel tank: 490 l
Emission category	Euro6

## EQUIPMENT

### Safety

- Antilock Braking System ABS
- Anti Slip Regulation ASR
- Electr. Stability Programm ESP
- Immobilizer
- Retarder
- Rear underrun
- Electr. and heated kerb mirror: right
- Electr./heated wide angle mirror

### Comfort

- Adjustable steering column
- Electric window lift 2x
- Automatic climate control
- Driver's armrest
- Front seats adjustable in height
- Comfortable driver seat
- Additional heating
- Central locking with remote control
- Heated drivers seat
- Air-suspended driver seat
- Driver's lumbar support
- Isolated driver's cab
- DC/AC converter

### Interior

- Board computer
- Multifunctional steering wheel
- Aluminum inlays
- Digital tachograph
- Carpet floor covering
- Cooling box

### Light and sight

- Fog lights
- Tinted glass
- Headlight range control
- Cornering light
- Daytime running lights
- Ambient lighting

### Exterior

- Self-levelling suspension
- Electr. and heated rear view mirrors
- Low noise
- Rear differential lock
- Fifth wheel
- 1x15 pin plug
- Cab Suspension
- Working lights
- Lifting roof (manual)

- Telematics system

### Assistance systems

- Adaptive Cruise Control ACC
- MAN BrakeMatic
- Brake assist: Emergency Brake Assist 2
- Lane-Guard-System LGS
- Hill Hold Control HHC
- Speed limiter

### Wheels and tyres

- Spare wheel carrier

### Audio & communication

- MAN Media Pack Navigation
- Radio
- Mobile phone preparation Bluetooth
- Soundsystem
- AUX & USB connector

### Equipment packages

- Aero package
- Safety plus package

### Others

- front springs parabolic 7.5 t, rear air suspension 13 t, hub reduction rear axle Hypoid HY-1350, HY axle ratio i 2.71, fuel filter heating, cab insulation NORDIC, supply kit for semitrailer with lifting axle or moving-off aid, trailer socket 24V (15-pin), pick-up plate 40 mm