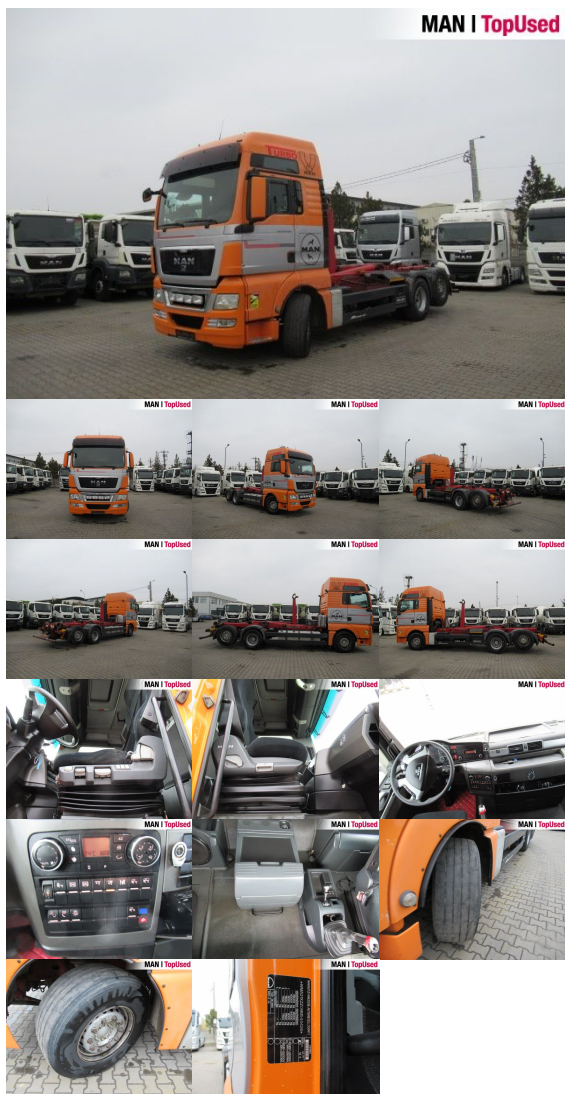


MAN TGX 26.480 6X2-2 LL

SH03381122



Price **7,500 EUR** (net)
8,925 EUR (gross)

Offer Date 27.12.2024

Body type	Tractor unit
1st reg.	04/2009
Power	353kW (480 HP)
Mileage	1276864 km
Storage location	Otopeni - MHS Truck Service

BASIC DATA

Brand	MAN
Model serie	TGX
Model variant	TGX TG2
Body type	Tractor unit
Colours	orange
Driver's cab	XXL
Berths	2 berths

TECHNICAL DATA

Power	353 kW (480 HP)
Fuel	Diesel
Gearbox type	Manual
Wheel drive	6x2-2
Suspension	Air suspension
Axles	3 axles

WEIGHTS AND MEASURES

Rear overhang	2400 mm
Wheel base	4500 mm
	1350 mm
Fuel tank	AdBlue: 75 l
	Fuel tank: 680 l
Emission category	Euro5

EQUIPMENT

Safety

- Antilock Braking System ABS
- Anti Slip Regulation ASR
- Immobilizer
- Intarder
- Rear underrun
- Electr. and heated kerb mirror: right
- Electr./heated wide angle mirror

Wheels and tyres

- Light alloy rims: SPEEDLINE, ALCOA matt
- Spare wheel carrier

Interior

- Board computer
- Multifunctional steering wheel
- CB radio
- Digital tachograph

Exterior

- Clevis trailer coupling: ROCKINGER 400G150A
- Electr. and heated rear view mirrors
- Low noise
- Lift axle
- Rear differential lock
- PTO
- Spare wheel
- Working lights
- Axle load indicator

Comfort

- Adjustable steering column
- Electric window lift 2x
- Automatic climate control
- Driver's armrest
- Electr. lifting sunroof
- Front seats adjustable in height
- Comfortable driver seat
- Additional heating
- Central locking
- Heated drivers seat
- Air-suspended driver seat
- Driver's lumbar support
- Isolated driver's cab
- DC/AC converter

- Carpet floor covering
- Cooling box

Audio & communication

- Radio/CD: MAN BasicLine 24V
- Soundsystem

Light and sight

- Fog lights
- Tinted glass
- Cornering light
- Ambient lighting

Assistance systems

- Cruise control
- MAN BrakeMatic
- Hill Hold Control HHC
- Speed limiter